

THE GALA

FOX COVERT | MISTERTON

TOWN & COUNTRY
COLLECTION



FOUR BEDROOM MID TOWN HOUSE ARRANGED ON
THREE FLOORS WITH UTILITY AND GARAGE

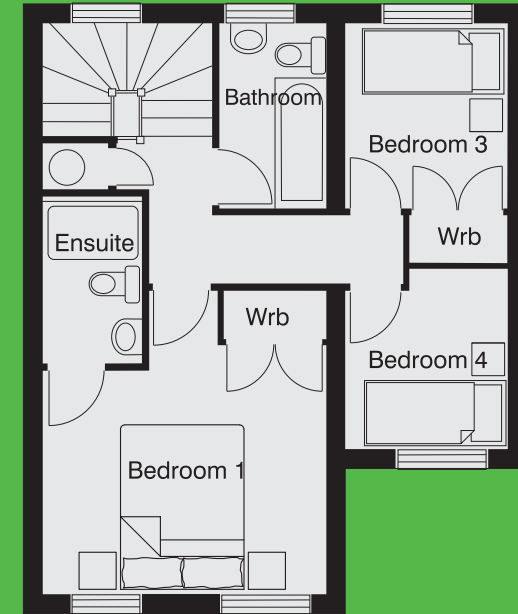
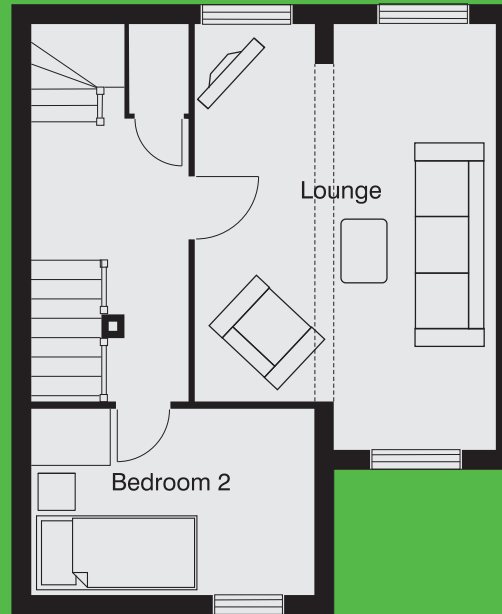
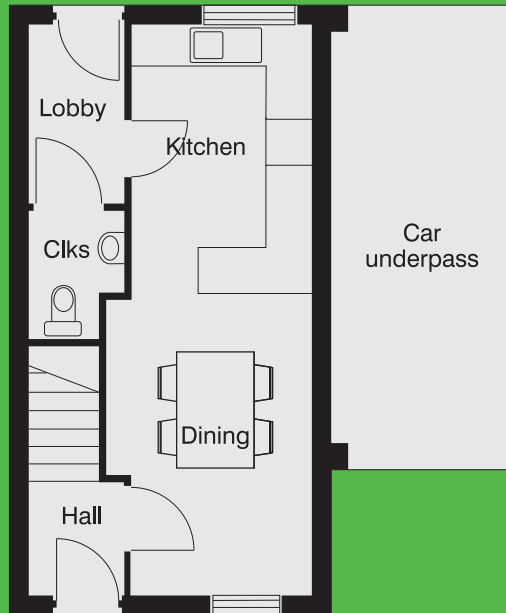
3 BEDROOMS 126 SQ.M (1,356 SQ. FT)

- ✓ Luxury fitted kitchen & appliances
- ✓ Carpets and light fittings
- ✓ Off street parking



THE GALA

FOUR BEDROOM MID TOWN HOUSE WITH GARAGE



GROUND FLOOR

Entrance Hall	1.52m x 1.32m	(4' 11" x 4' 3")
Kitchen	2.42m x 3.50m	(7' 11" x 11' 5")
Dining	3.22m x 3.68m	(10' 6" x 12' 0")
Utility Room	1.69m x 2.08m	(5' 6" x 6' 9")
Cloakroom	1.73m x 0.97m	(5' 7" x 3' 2")
Garage	5.34m x 2.73m	(17' 6" x 8' 11")

FIRST FLOOR

Lounge	5.00m x 5.25m	(16' 4" x 17' 3")
Bedroom 2	4.24m x 2.90m	(13' 11" x 9' 6")
Landing	1.16m x 2.64m	(3' 9" x 8' 8")
Store	0.86m x 1.43m	(2' 9" x 3' 9")

SECOND FLOOR

Bedroom 1	4.25m x 3.72m	(13' 11" x 12' 2")
En suite	1.15m x 2.20m	(3' 9" x 7' 2")
Bedroom 3	2.65m x 2.88m	(8' 8" x 9' 5")
Bedroom 4	2.65m x 2.25m	(8' 8" x 7' 5")
Family Bathroom	2.09m x 2.44m	(6' 10" x 8' 0")
Landing	3.29m x 0.79m	(14' 5" x 2' 7")