

THE LAMBOURNE

FOX COVERT | MISTERTON

TOWN & COUNTRY
COLLECTION



TWO AND THREE BEDROOM BUNGALOWS
WITH GARAGE OR PARKING SPACE

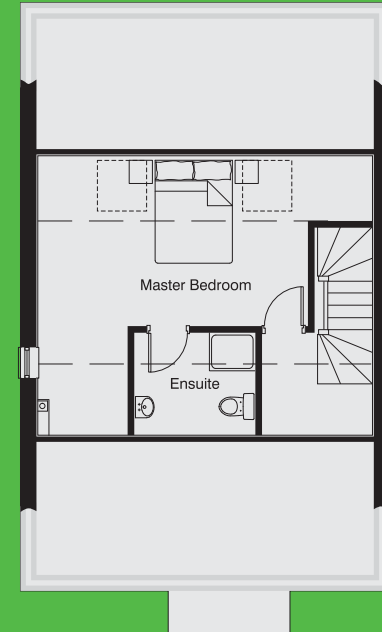
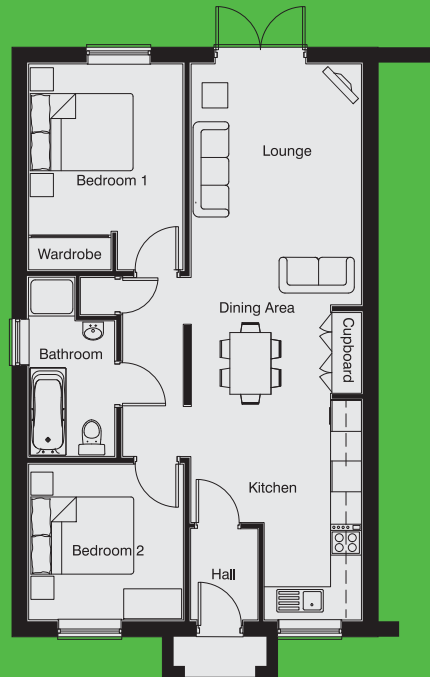
2 BEDROOM BUNGALOW 70 SQ.M (753 SQ. FT)
3 BEDROOM BUNGALOW 104.4 SQ.M (1124 SQ. FT)

- ✓ Breathtaking views of the countryside
- ✓ Off street parking
- ✓ Designer chosen kitchen, carpets and flooring already fitted



THE LAMBOURNE

TWO AND THREE BEDROOM BUNGALOWS WITH GARAGE OR PARKING SPACE



2 BEDROOM | GROUND FLOOR

Entrance Hall	1.80m x 1.33m (5' 11" x 4' 4")
Kitchen-Diner	6.12m x 3.30m (20' 1" x 10' 10")
Lounge	4.68m x 3.30m (13' 1" x 10' 10")
Bedroom 1	4.00m x 3.00m (13' 1" x 9' 10")
Bedroom 2	3.03m x 3.00m (9' 10" x 9' 10")
Bathroom	3.48m x 1.67m (11' 5" x 5' 5")
Inner hall	3.48m x 1.17m (11' 5" x 3' 10")

3 BEDROOM | GROUND FLOOR

Entrance Hall	1.80m x 1.33m (5' 11" x 4' 4")
Kitchen Diner	6.12m x 3.30m (20' 1" x 10' 10")
Lounge	4.68m x 3.30m (13' 1" x 10' 10")
Bedroom 1	4.00m x 3.00m (13' 1" x 9' 10")
Bedroom 2	3.03m x 3.00m (9' 10" x 9' 10")
Bathroom	3.48m x 1.67m (11' 5" x 5' 5")
Inner hall	3.48m x 1.17m (11' 5" x 3' 10")

3 BEDROOM | FIRST FLOOR

M/Bedroom	6.46m x 5.35m (21' 2" x 17' 6")
Ensuite	2.35m x 1.96m (7' 8" x 6' 5")
Landing	2.15m x 1.96m (7' 0" x 6' 5")