

THE PERMAIN

FOX COVERT | MISTERTON

TOWN & COUNTRY
COLLECTION



THREE BEDROOM TOWN HOUSE WITH EN-SUITE TO
MASTER BEDROOM, SEPARATE UTILITY AND GARAGE

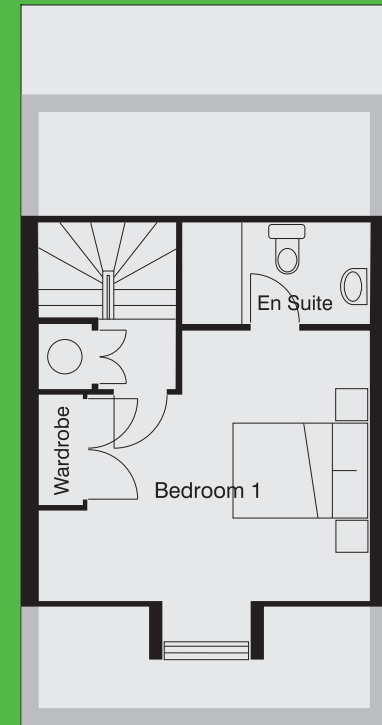
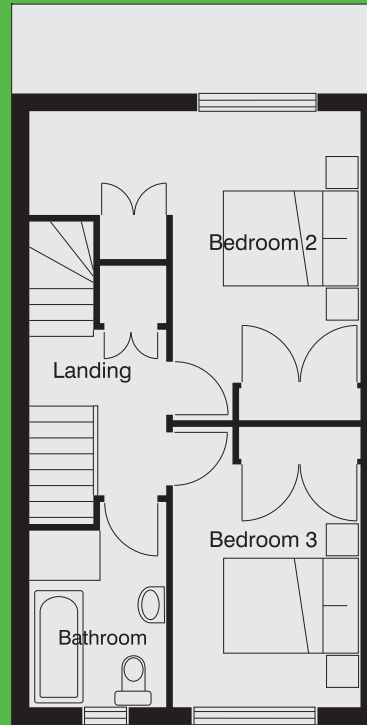
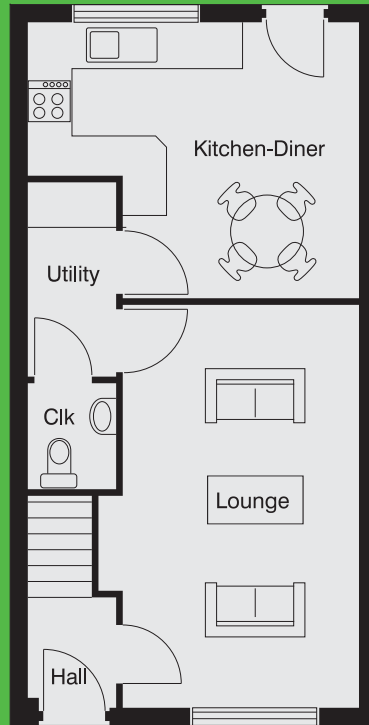
3 BEDROOMS 104 SQ.M (1,125 SQ. FT)

- ✓ Quality fitted kitchen & appliances
- ✓ Utility room
- ✓ Award winning house



THE PERMAIN

THREE BEDROOM TOWN HOUSE WITH UTILITY AND GARAGE



GROUND FLOOR

Entrance Hall	1.32m x 1.72m (4' 4" x 5' 8")
Lounge	5.68m x 3.56m (18' 8" x 11' 8")
Kitchen-Diner	4.58m x 3.80m (15' 0" x 12' 6")
Utility Room	1.34m x 2.64m (4' 4" x 8' 8")
Cloakroom	1.18m x 1.42m (3' 10" x 4' 7")

FIRST FLOOR

Bedroom 2	4.33m x 4.30m (14' 3" x 14' 1")
Bedroom 3	3.88m x 2.54m (12' 9" x 8' 4")
Family Bathroom	2.98m x 1.91m (9' 9" x 6' 3")
Landing	1.90m x 2.33m (6' 3" x 7' 7")

SECOND FLOOR

Bedroom 1	4.45m x 4.16m (14' 7" x 13' 8")
Ensuite	2.57m x 2.10m (8' 5" x 6' 11")